

Turf Management



Using **Chemistry** in
Harmony
with **Nature.**



NaturChem also offers complete maintenance of improved turf areas at plant sites, commercial locations and industrial areas. Our program may include mowing, fertilization, over-seeding, pre- and post-emergent weed control and insect control.

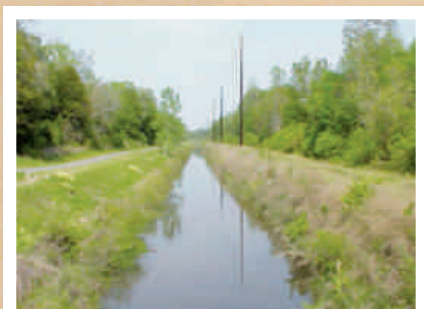
Improved Areas Include:

- Commercial Sites
- Industrial Sites
- Golf Courses
- Parks
- Airports

NaturChem's Industrial Turf Management Program is a herbicide program designed to promote a consistent turf that is weed free and more uniform. Unimproved turf management is accomplished by providing selective weeding treatments that remove unsightly, tall and annoying weeds. Brush, vines and foreign grasses can be removed from slopes and rights-of-way eliminating the need for mowing. Growth suppression may be applied during the growing season to greatly reduce the need for mowing.

Unimproved Areas Include:

- Plant Sites
- County and Regional Airports
- Slopes
- Ditch Banks
- Water and Sewer
- Rights-of-Way
- Parks



Clients Include

- City of Fort Valley
- Knoxville Airport
- Nashville Airport
- New Orleans Lakefront Airport
- US Army Corp of Engineers
- Hall Co. Parks & Rec
- Peachtree Dekalb Airport
- City of Hawkinsville
- City of Conyers
- Fitzgerald Airport
- US Grounds
- Alabama St. Parks
- Montevallo Parks
- Albertville
- Birmingham Airport
- Pensacola Regional Airport
- Mobile Airport

Benefits of Precision

Turf Management:

- Lower Maintenance Cost
- Improve Aesthetics
- Established Monoculture
- Ground Cover
- Reduces Soil disturbance (Rutts)
- Less interference of equipment
- Safer than mechanical mowing
- Longer lasting effects

